



Roca

Ferro



Ferro Brown 24"x48" R



Ferro Steel 24"x24" R



Ferro Silver 12"x24" R

Ferro

Color Body Porcelain



24"x48" R 24"x24" R 12"x24" R
60x120 cm 60x60 cm 30x60 cm



Silver



24"x48" R
CFMT03-2448



24"x24" R
CFMT03-24



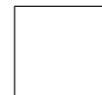
12"x24" R
CFMT03-1224



Brown



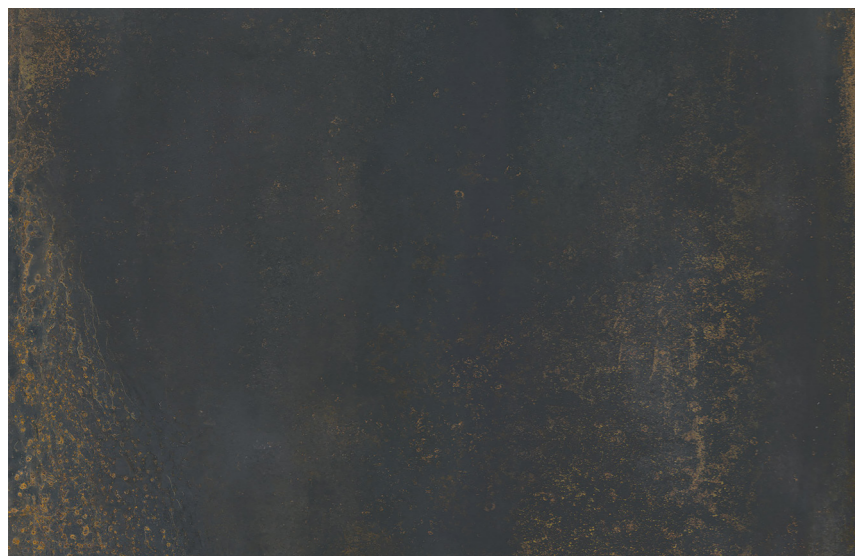
24"x48" R
CFMT02-2448



24"x24" R
CFMT02-24



12"x24" R
CFMT02-1224



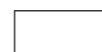
Steel



24"x48" R
CFMT01-2448



24"x24" R
CFMT01-24



12"x24" R
CFMT01-1224

Technical Specifications

CHARACTERISTICS	STANDARD	DECLARED ASTM
Water Absorption	ISO-10545/3	<=0.5%
Break Strength	ISO-10545/4	290
Scratch Hardness	EN-101	5
Chemical Resistance	ISO-10545/13	Unaffected
Frost Resistance	ISO-10545/12	Resistant
Group	ISO-10545/7	3
PEI	C1027	3 (Silver), 2 (Brown & Steel)
Minimum Bond Strength (PSI)	C482	165
Dynamic Coefficient of Friction (DCOF)	A137.1	>=0.42
Shade and Texture Rating	CTDA	V2
Facial Dimensions	ISO-10545/2	Pass
Range of Thickness	ISO-10545/2	Pass
Warpage	ISO-10545/2	Pass
Wedging	ISO-10545/2	Pass

Packaging Info

Size	SF per carton	PC per carton
12"x24" R	11.62	6
24"x24" R	11.62	3
24"x48" R	15.49	2